

Immunophenotyping Control



CD-Chex CD103™ Plus is the only commercially available positive procedural control that includes CD103, CD30, CD38, CD56, CD138 and cytoplasmic Lambda. The product possesses surface antigens and intracellular antigens detectable with fluorescent monoclonal antibodies by flow cytometry.

- Unique control with two distinct abnormal leukocyte populations: CD45 Positive and CD45 Negative
- Monitors reagent staining, erythrocyte lysis, sample preparation, and instrument performance

Stability (Store 2 °C - 10 °C)

Closed-vial stability	90 days
Open-vial stability	30 days

Compatibility

BD Biosciences and Beckman Coulter® flow cytometry systems

Convenience

CD-Chex CD103 Plus eliminates the need for labs to hold and validate patient samples to use as a control for CD103, CD30, CD38, CD56, CD138, and cytoplasmic Lambda, saving the lab time and money.

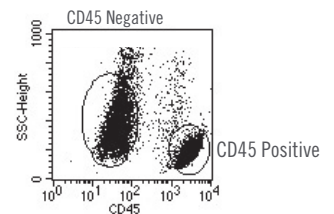
Assayed Markers

Phenotype	CD45 Phenotype	WBC Type
CD38	Positive	Abnormal
CD103		

For Reference Use Only

Absolute WBC (x 10³/μL)

CD30	Negative	Abnormal
CD38		
CD56		
CD138		
cLambda		



Ordering Information

Description	Catalog #
1 x 1.0 mL	213567
2 x 1.0 mL	213568

800.843.0912 | STRECK.COM 320607-2 2017-07

STATS®

Interlaboratory Quality Control program features online accessibility with enhanced real-time reporting and improved account management capability. Open to all customers at no charge, the Streck STATS program includes personalized, easy-to-read reports that detail performance, identify trends and facilitate real-time prompt corrective action.

FOR RESEARCH USE ONLY. NOT FOR USE IN DIAGNOSTIC PROCEDURES.

The brand and product names of the instruments are trademarks of their respective holders.



www.rafer.es