

THE SLIM FAMILY FOR FAST BLOTTING!

Designed for all blottings:

PROTEINS: WESTERN with standard alloy anode and cathode.

DNA: SOUTHERN with platinized Titanium anode.

RNA: NORTHERN with platinized Titanium anode.

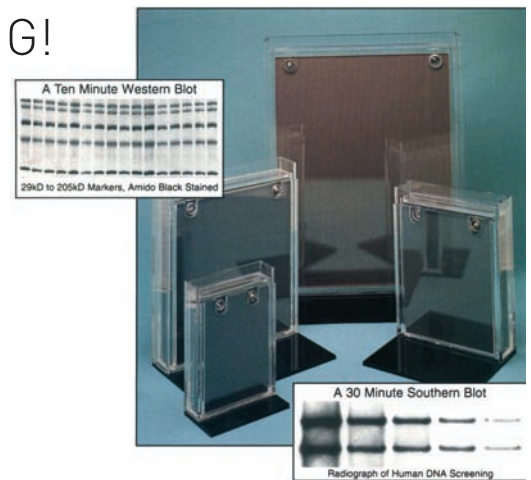
- Western Blots of 0,75 or 0,8mm thick gels are cleared of proteins up to 170kD in size in 40 minutes at 24Volts.
- Western Blots of 1mm thick gels in 30 minutes at 24Volts.

THE BEST SPECIFICATIONS OF THE SLIM BLOTTERS

- LOW BUFFER VOLUME.
- No maintenance on the platinized Titanium electrodes.
- Standard alloy electrodes should be wiped occasionally.
- Just a few minutes for loading.
- High surface area assures a high field at the gel.
- 5 models with alloy electrodes for WESTERN Blot.
- 5 models with platinized Titanium anode for SOUTHERN and NORTHERN blotting.
- No bubble surrounding the electrodes.

ORDERING INFORMATION

504001	10 x 15 cm unit with alloy anode for Western Blots Buffer 350 ml
504015	15 x 20 cm unit with alloy anode for Western Blots Buffer 800 ml
504020	20 x 24 cm unit with alloy anode for Western Blots Buffer 1400 ml
504040	25 x 34 cm unit with alloy anode for Western Blots Buffer 2500 ml
504002	10 x 15 cm unit with Platinized Titanium anode for Southern and Western Blots Buffer 350 ml
504017	15 x 20 cm unit with Platinized Titanium anode for Southern and Western Blots Buffer 800 ml
504021	20 x 24 cm unit with Platinized Titanium anode for Southern and Western Blots Buffer 1400 ml
504041	25 x 34 cm unit with Platinized Titanium anode for Southern and Western Blots Buffer 2500 ml
504005	10 x 15 cm Platinized Titanium anode for nucleic acid blots
504010	15 x 20 cm Platinized Titanium anode for nucleic acid blots
504027	20 x 24 cm Platinized Titanium anode for nucleic acid blots
504044	25 x 34 cm Platinized Titanium anode for nucleic acid blots



Loading Position

SUGGESTED POWER SUPPLIES

PS 305 - 300 Volts - 500 mA - Cat. No. 170000

PS 304 - 300 Volts - 400 mA - Cat. No. 160500



Blotting Position